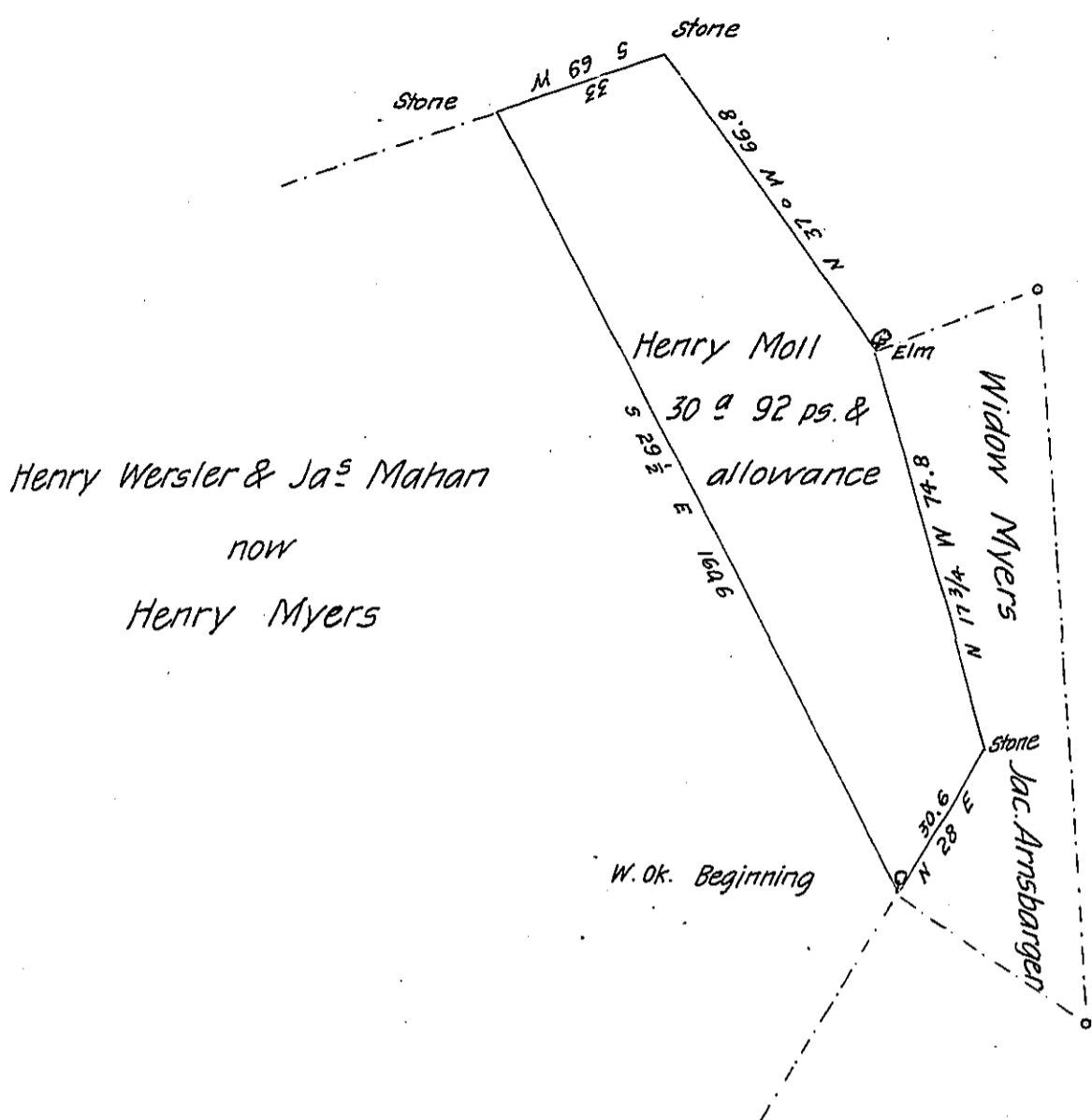


Casper Ellicker now

Geo. Ellicker



Situated in Latimore township Adams County Contain<sup>in</sup>g 30<sup>as</sup> 92<sup>ps</sup> and allowance being part of a larger tract said to contain 49<sup>as</sup> 50<sup>ps</sup> & allowance Surveyed August 23<sup>d</sup> 1791 by Jn<sup>o</sup> Forsyth D.S. by Warrant to Henry Moll dated June 9<sup>th</sup> 1763. Resurveyed and divided as above set forth at the request of Henry Myers the present owner April 1<sup>st</sup> A.D. 1841.

By

Jas<sup>s</sup> Boyd D.S.

To Jacob Sallade Esqr.

Surveyor General

IN TESTIMONY that the above is a copy of the original remaining on file in the Department of Internal Affairs of Pennsylvania, made conformably to an Act of Assembly approved the 16th day of February, 1833, I have hereunto set my Hand and caused the Seal of said Department to be affixed at Harrisburg, this eighteenth day of April 1906

*Isaac R. Brown*  
Secretary of Internal Affairs.